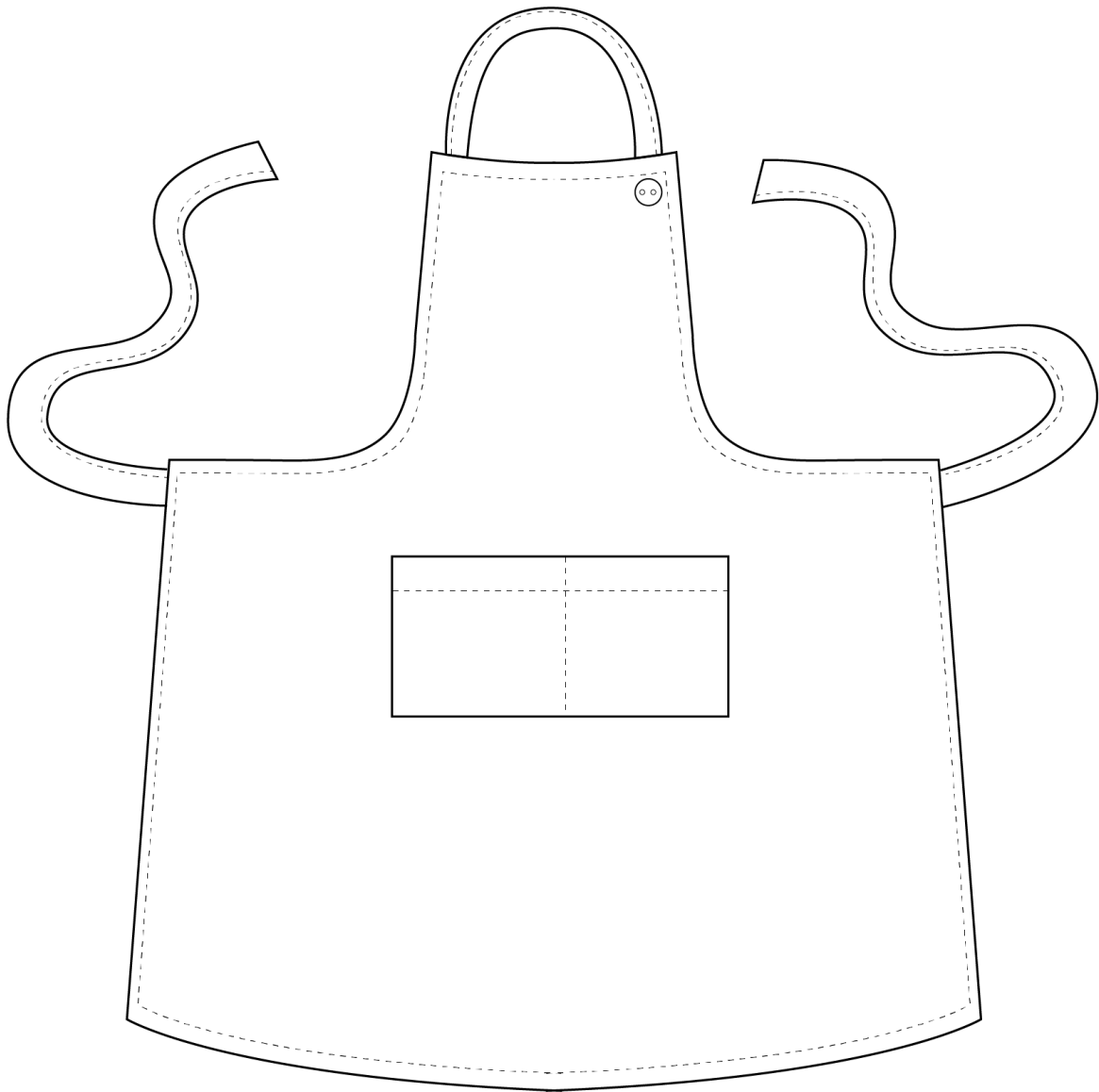


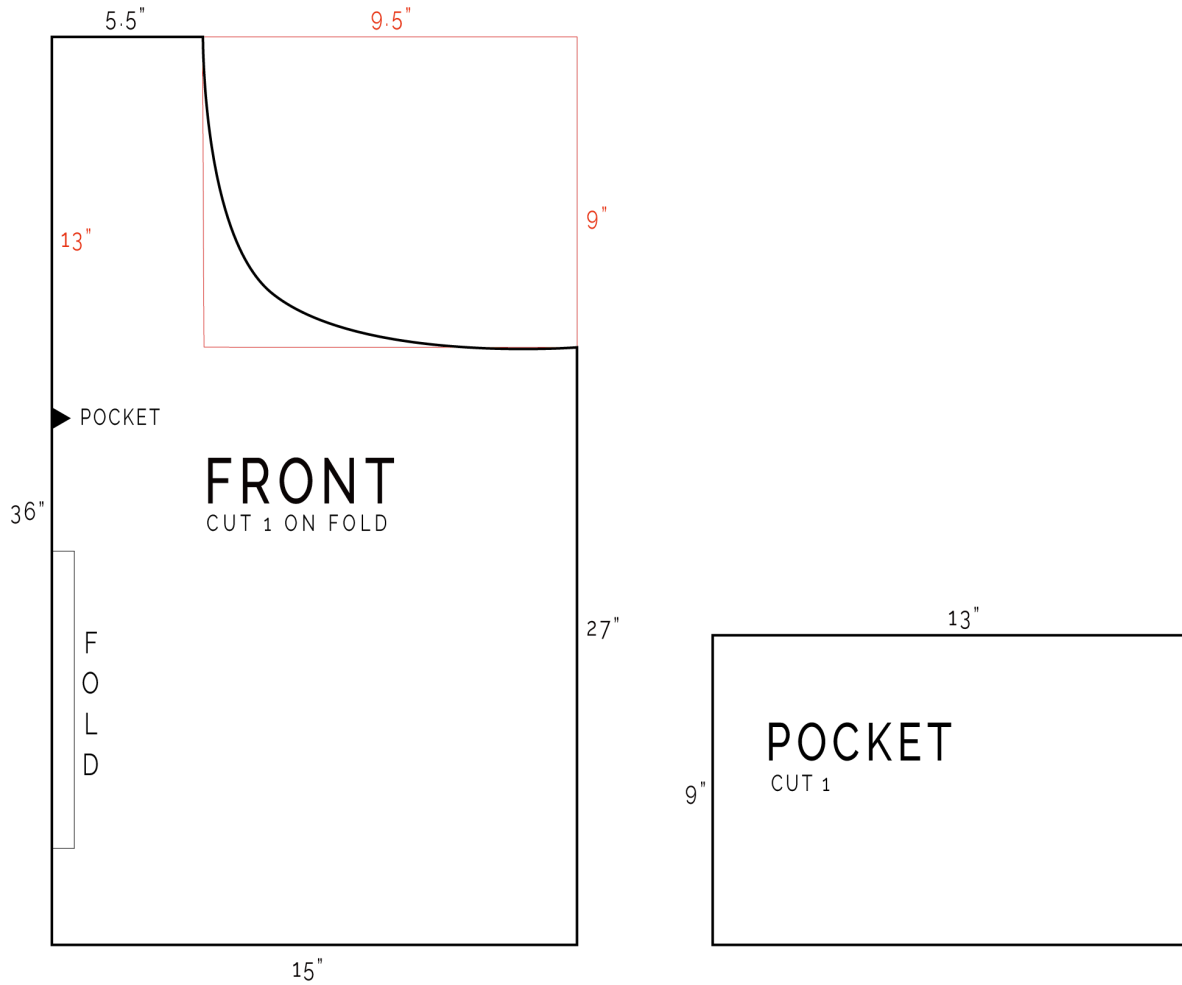
BIB APRON

sewing with sara



CUT SIZE

3/8" SEAM ALLOWANCE INCLUDED



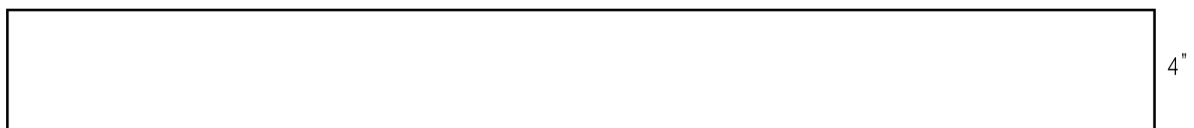
NECK BAND

CUT 1 26"



WAIST TIE

CUT 2 33"



Measurements taken from Dailylike's Bib Apron design.

*This measurement sheet is for personal use only.
Please do not use it for commercial purposes.*

Please read the description in (below) the YouTube video
before beginning.

Any additional questions can be asked in the comments.

Stay safe and healthy!

Let's get connected!

Sewing Therapy

Instagram – [instagram.com/yoursara_k](https://www.instagram.com/yoursara_k)

Blog – sewingtherapy.net

Twitter – twitter.com/SewingTherapy

Dailylike Canada

Instagram – [instagram.com/dailylikecanada](https://www.instagram.com/dailylikecanada)

Facebook – [facebook.com/dailylikecanada](https://www.facebook.com/dailylikecanada)

Pinterest – [pinterest.ca/dailylikecanada](https://www.pinterest.ca/dailylikecanada)

Two O Nine Fabric Studio

Instagram – [instagram.com/twooninefabric](https://www.instagram.com/twooninefabric)